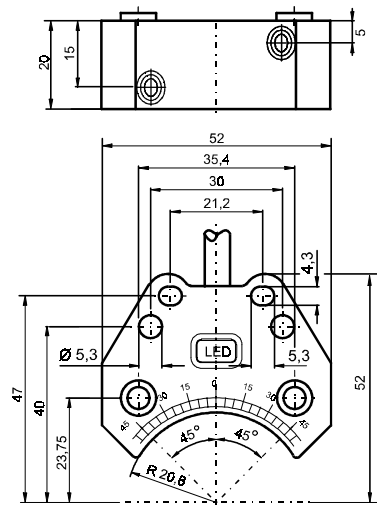
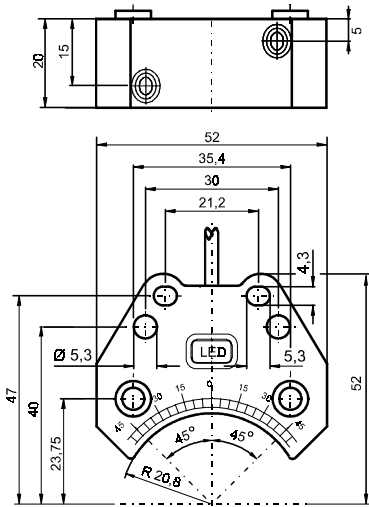


矩形

DC

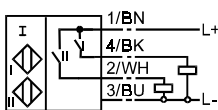
2-wire



额定动作距离Sn安装	3 mm,	3 mm,
DC 常开	NBN3-F25-Z8-0,14	NBN3-F25-Z8
DC 常开 / 常闭		
可靠动作距离范围. s _a [mm]	0 ...2,43	0 ...2,43
衰减系数	r _{ST37}	1,2
	r _{V2A}	1
	r _{AI}	0,5
工作电压 U _B [V]	6 ...60	6 ...60
工作电流 I _L [mA]	4...100	4...100
开关频率 [Hz]	500	500
漏电流 I _R [mA]	1	1
电压降 [V]	5	5
短路保护	no	no
极性保护	脉冲	tolerant
输出显示	LED, 黄	LED, yellow
阀状态显示	-	-
工作温度 [°C]	-25 ...70	-25 ...70
EMC to	EN 60947-5-2	EN 60947-5-2
In compliance with	EN60947-5-2	EN60947-5-2
Protection to IEC 60529	IP 67	IP 67
System connection (S)		5m, PVC-cable
导线横截面	0,75 mm ²	0,75 mm ²
Valve connection (V)	-	-
Wire cross section Valve	-	-
外壳材料	PBT	PBT

电气连接

Z8



Inductive Proximity Switches