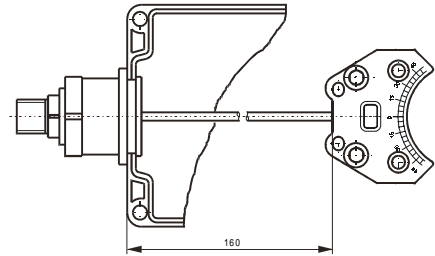
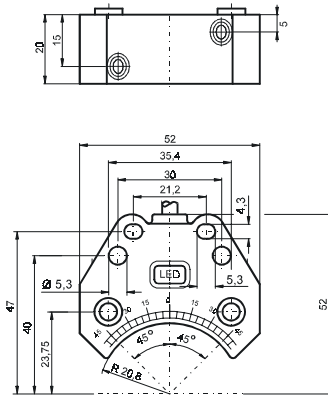


矩形

DC

3-wire



CE

额定动作距离Sn安装	3 mm,			
	NBN3-F25-E8-K1V1			
可靠动作距离范围 . s _a [mm]	0 ...2,43			
衰减系数 r	r _{S137}	1,2		
	r _{V2A}	1		
	r _{AI}	0,5		
工作电压 U _B [V]	10 ...30			
工作电流 I _L [mA]	200			
开关频率 y [Hz]	500			
空载电流 [mA]	25			
电压降 p [V]	3			
短路保护	脉冲			
极性保护				
输出显示	LED, 黄			
阀状态显示	-			
工作温度 [°C]	-25 ...70			
EMC to	-			
In compliance with	EN60947-5-2			
Protection to IEC 60529	IP 67			
System connection (S)	V1-连接器			
Conductor cross section				
Valve connection (V)	-			
Wire cross section Valve	-			

电气连接

EB

